



9 Roydfield Drive
Waterthorpe
Sheffield
S20 7ND

Email: bds@bstephen.me.uk

Website: <http://www.bstephen.me.uk>

October 2009

WINTON CAPITAL JUNIOR BRITISH CHESS SOLVING CHAMPIONSHIP 2009-2010

(Organised by the British Chess Problem Society)

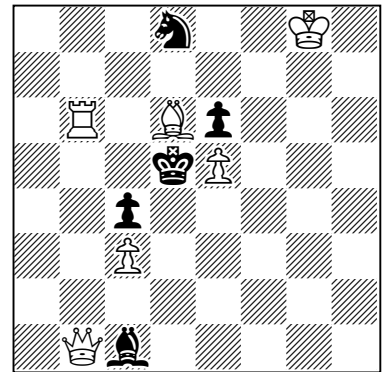
CAN YOU SOLVE THIS TWO-MOVER?

Dear Junior Player/Coach

You may know that Great Britain were the World Chess Solving Champions, in 2005, 2006 and 2007, while otb and solving GM John Nunn was individual World Champion in 2004 and 2007.

This year, as normal, the Winton Capital British Chess Solving Championship includes a section for juniors, run separately from the senior event. The 2008-2009 Junior Championship was tied between Adam Bremner (Aberdeen) and Adam Lang (West Yorkshire) with Methodist College Belfast winning the team prize.

WCJBCSC Starter 2009-2010



White to play and mate in two

The chess problem (above right) is the starter problem for the Winton Capital Junior British Chess Solving Championship 2009-2010, for competitors who are 21 or under on 31st December 2009. White, playing up the board, is to play and force mate in two moves against any black defence. The competition is open to British residents only. Competitors need only send White's first move, known as the key-move. Entries are free and should be sent to:-

Paul Valois
14 Newton Park Drive
LEEDS
LS7 4HH
Email: paulvalois@yahoo.co.uk

Competitors may enter individually or schools and clubs may make team entries. All entries should be postmarked no later than 31st December 2009. After the closing date all schools, clubs and independent competitors will receive the answer to the starter problem and those who get it right will also receive the postal round by post or by email, which will contain 6 more difficult and varied problems – though simpler than those used for the senior competition. There will be a chess book prize for a correct solution to this starter problem chosen at random. Last year, a copy of Levitt and Friedgood: *Secrets of Spectacular Chess* was won by Winchester College. The prize for the individual champion will be £50. There will also be a special prize of £50 for the best team entry in the postal round.

It is also possible for individuals to compete in the British Chess Solving Final held at Oakham School in February 2010, where there will be a junior prize. Please contact me if you are interested in competing.

You will be able to find out more about the BCPS and chess problems, will be able to follow the course of the competition and will find problems from earlier years at my website at <http://www.bstephen.me.uk>.

The BCPS wishes to thank all those of you who are able to support this event.

with best wishes

Brian Stephenson
Controller - Winton Capital Junior British Chess Solving Championship